

BAR MON AMI



**ARTIST  
INSTALLATION  
PROGRAM**

# TABBLE OF CONTENTS

## **01 - PAGE 4**

How It Works - Quick Guide

## **02 - PAGE 5**

Selection Process

## **03 - PAGE 6**

Promotion & Partnership

## **04 - PAGE 7**

Exhibition Term


## **05 - PAGE 8**

Artist Responsibilities

## **06 - PAGE 11**

Our Commitment

# A THOUGHTFUL PATH FROM SUBMISSION TO EXHIBITION.



This guide outlines how artist installations are presented at Bar Mon Ami (BMA), offering a clear overview of the process from submission through installation, sales, and closing. It is designed to provide artists with everything needed to confidently participate—covering expectations, responsibilities, and the overall experience of showcasing work within the space.

At Bar Mon Ami, our walls are more than a backdrop—they are part of the experience. Each installation is curated with the same care as our cocktails: thoughtful, layered, and designed to invite curiosity.

We feature quarterly rotating exhibitions, highlighting artists whose work complements the intimacy, warmth, and conversational nature of the space. From subtle, intricate pieces to bold visual statements, each collection is selected to live comfortably within the rhythm of the bar. All exhibited works are available for purchase, with a commission retained by Bar Mon Ami upon sale. Each exhibition is introduced with an opening night gathering, where guests are invited to meet the artist, explore the work, and experience the space in a new light.



# HOW IT WORKS

## QUICK GUIDE

Our installation process is designed to be clear, collaborative, and intentional—guiding each artist from initial submission through installation and into a fully realized exhibition within the space. Each step is thoughtfully structured to ensure your work is presented with care and experienced as part of the Bar Mon Ami atmosphere (BMA).



### SUBMIT YOUR WORK

## 01.

Submit images, a brief bio, and detailed information that reflects your work and artistic perspective. Be sure to include key details such as medium, dimensions, pricing, and any cohesive concept behind the collection..

### SELECTION & CONFIRMATION

## 02.

Selected artists are contacted to confirm participation, with exhibition timing, expectations, and key details outlined—including a 40% commission retained by the bar on all works sold. Artists will receive guidance on next steps, including preparation requirements such as providing anti-theft measures and clear labeling for each piece.

### THE PROMOTION

## 03.

Each exhibition is thoughtfully promoted through BMA's social channels and in-house visibility. This ensures your work is introduced to our community and integrated into the ongoing experience of the space.

### EXHIBIT & EXPERIENCE

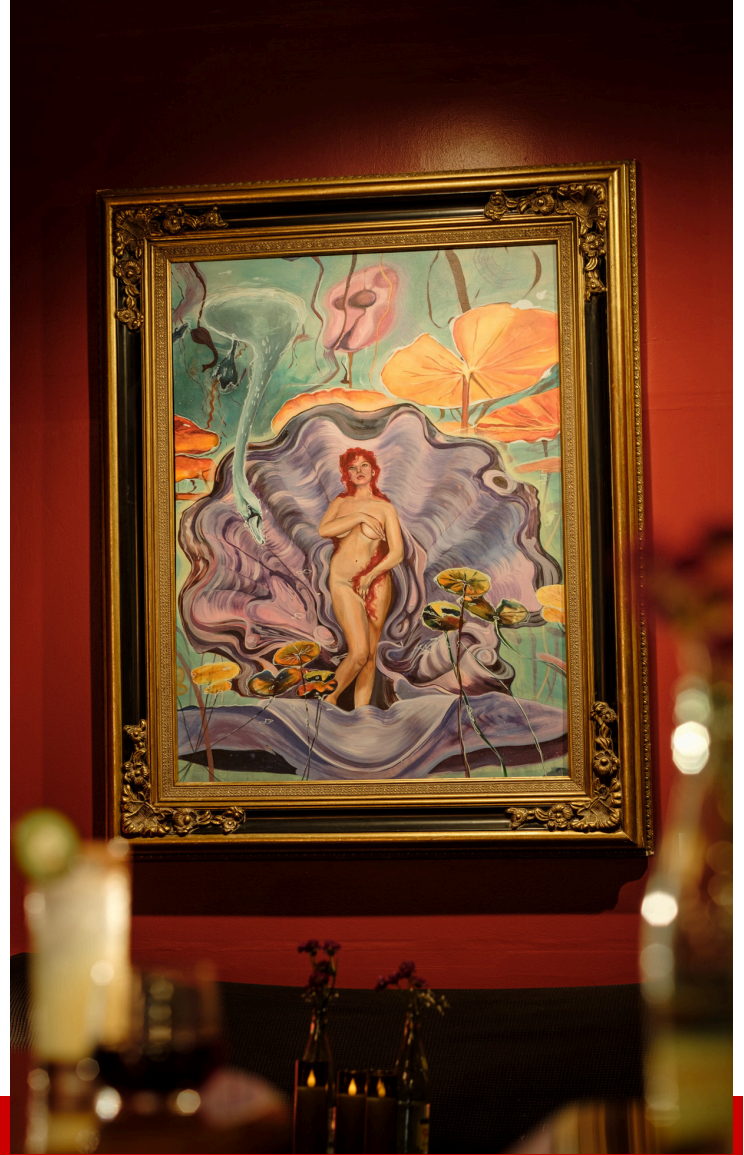
## 04.

Artists coordinate delivery and installation within the scheduled timeframe, preparing their work to live within the space. The exhibition is introduced with an opening night at the bar and remains on display for a three-month term, with all pieces available for purchase throughout.

# SELECTION PROCESS

Every installation at Bar Mon Ami (BMA) is approached with care and intention. We consider how each artist's work will live within the space—not only visually, but atmospherically—ensuring it complements the rhythm of the bar and invites guests to engage, linger, and connect.

Our selection process is thoughtful, collaborative, and designed to give each body of work the right moment to be experienced.



## SUBMISSION & REVIEW 01.

- Artists submit images, a brief bio, and detailed information that offers a clear sense of their work, perspective, and overall style.
- Each submission is thoughtfully reviewed for quality, cohesion, and presentation; both individual pieces and the collection as a whole.
- Careful attention is given to how the work aligns with the tone, intimacy, and atmosphere of the bar.

## CURATION & SELECTION 02.

- Submissions are evaluated with consideration of scale, material, and overall presence within the space.
- We select work that creates a balanced and cohesive exhibition, allowing each piece to stand on its own while contributing to the overall experience.
- *Continued on right*

- Layout, lighting, and the natural flow of the bar are considered to ensure each piece is properly seen and comfortably experienced.

## SCHEDULING & CONFIRMATION 03.

- Selected artists are contacted to confirm participation and secure placement within an upcoming exhibition.
- Exhibition timing, expectations, and key details are clearly outlined to ensure alignment from the start.
- Installation, opening night, and final logistics are coordinated collaboratively, creating a seamless and thoughtfully presented experience.

# PROMOTION & PARTNERSHIP

Promotion at Bar Mon Ami (BMA) is a shared effort—designed to thoughtfully introduce each exhibition to our community while maintaining the tone and intimacy of the space. We support each artist through curated visibility, while also encouraging artists to actively engage their own audience to create a well-rounded and successful exhibition.



## INSTALLATION ANNOUNCEMENT 01.

- BMA will announce the upcoming exhibition across social media and in-house channels.
- Artists are encouraged to share the announcement and tag BMA (@barmonamisa) to extend reach.

## OPENING NIGHT 02.

- BMA will host and promote the opening night, providing a welcoming, social setting and featuring a curated cocktail in honor of the artist; our team will help coordinate all setup and breakdown at no cost.
- Artists are encouraged to attend, engage with guests, and invite their network; light snacks are welcomed but not required, and BMA *may* assist in sharing the cost upon request, depending on scope and reasonability\*

## ONGOING VISIBILITY 03.

- BMA will highlight select works throughout the exhibition via social media and in-bar exposure.
- Artists are encouraged to continue sharing their work, visits, and moments from the exhibition.

## COLLABORATION & CONTENT 04.

- BMA may collaborate on content featuring the artist and their work, including curated posts, stories, and in-bar highlights when appropriate.
- Artists should provide high-quality images, background details, and be open to light collaboration, such as features, tags, and shared content to support visibility.

# EXHIBITION TERM

Each exhibition at Bar Mon Ami is presented over a three-month (quarterly) term, allowing the work to settle naturally into the rhythm of the space. Unlike a traditional gallery setting, our environment invites discovery over time—guests return, notice new details, and engage with the work in a more organic, lived-in way.

The exhibition timeline is thoughtfully structured to ensure a smooth and intentional transition:

## INSTALLATIONS:

- Installation is scheduled in advance and coordinated closely with our team. This process is designed to be unhurried and considered, allowing the work to be placed in a way that feels cohesive with the flow, lighting, and atmosphere of the bar.
- All artwork must be delivered by the agreed-upon date. *Failure to meet installation deadlines may result in forfeiture or rescheduling of the exhibition at Bar Mon Ami's discretion.*

## OPENING NIGHT

- Shortly after installation, we host an opening evening to introduce the exhibition. This is a social, welcoming gathering—less formal than a gallery opening, and more in line with the spirit of Bar Mon Ami.
- *Bar Mon Ami reserves the right to determine the timing, format, and execution of the opening event.*

## ACTIVE EXHIBITION PERIOD

- Throughout the three-month term, the work remains on display and available for purchase. Guests encounter the pieces in passing, in conversation, and across multiple visits—allowing for a slower, more meaningful engagement.
- *Bar Mon Ami reserves the right to adjust placement of artwork at any time to best suit the space. In rare circumstances, work may be removed if deemed unsafe, damaged, or inconsistent with the environment.*

## DEINSTALLATION

- At the close of the exhibition, deinstallation is scheduled in advance to ensure a seamless transition into the next rotation. Artists are responsible for coordinating the removal of their work within the agreed timeframe.
- *Any artwork not removed within the specified timeframe may be subject to storage limitations, fees, or relocation at the artist's expense.*

# ARTIST RESPONSIBILITIES

At Bar Mon Ami, installations are a collaboration —your work brings the walls to life, and together we create an experience that feels cohesive, intentional, and welcoming. To ensure a smooth and successful exhibition, artists are expected to take an active and professional role throughout the process.

## PREPERATION & DELIVERY

Artists are responsible for:

- Delivering all artwork by the agreed-upon installation date
- Ensuring all pieces arrive clean, finished, and ready for display
- Confirming that all work matches the submitted and approved selections

*Late delivery or incomplete submissions may result in delays, adjustments, or cancellation of the exhibition at Bar Mon Ami's discretion.*

## INSTALLATION

Artists are expected to:

- Be on site and coordinate with Bar Mon Ami team for assistance during installation
- Use secure, wall-safe hanging methods (D-rings and wire preferred)
- Bring any necessary tools or hardware required for installation
- Final placement may be adjusted in collaboration with our team to ensure the work aligns with the layout, lighting, and flow of the space.

*Bar Mon Ami reserves the right to reposition or decline installation of any work that presents safety concerns or does not meet display standards.*

## DOCUMENTATION & INVENTORY

Prior to installation, artists must provide a complete and accurate record of all exhibited works, including:

- Title
- Medium
- Dimensions
- Price
- QR code linking to a direct payment method

This information allows our team to confidently communicate with guests and facilitate sales.

*Bar Mon Ami is not responsible for errors in pricing or missing information provided by the artist.*

# ARTIST RESPONSIBILITIES

## SALES, COMMISSION, & PAYMENT

All artwork displayed at Bar Mon Ami is offered for sale under the following terms:

- Bar Mon Ami retains a 40% commission on the final sale price of each piece
- The remaining 60% is retained by the artist
- Artists are responsible for accepting and processing all payments directly from buyers, unless otherwise agreed in writing with Bar Mon Ami
- The bar's 40% commission must be remitted to Bar Mon Ami no later than 30 days following the sale of the work

Tax Responsibility:

- Artists are solely responsible for reporting and paying any applicable taxes related to the sale of their artwork, including income tax or other required filings. Bar Mon Ami does not collect or remit taxes on behalf of the artist in direct-sale situations.

*Bar Mon Ami reserves the right to request documentation of completed sales to ensure proper commission reporting and payment. Failure to remit commission within the stated timeframe may result in removal from current or future exhibitions.*

## PROFESSIONAL CONDUCT

Artists are expected to:

- Communicate clearly and promptly regarding scheduling, sales, and logistics
- Conduct themselves professionally during installation, events, and interactions with staff and guests
- Actively participate in promoting the exhibition and sharing with their audience
- Respect the shared nature of the space as a working bar environment

*Bar Mon Ami reserves the right to remove artwork and/or terminate the exhibition at any time if the artist engages in racist, sexist, homophobic, or otherwise discriminatory or harmful behavior, whether in person, publicly, or on social media, that reflects poorly on the bar or its community.*

## EXHIBITION DURATION

All exhibitions at Bar Mon Ami are presented for a three-month (quarterly) term, allowing the work to live naturally within the space and be discovered over time.

- The exhibition will remain on display for the full agreed term; early removal by the artist may result in an early termination fee
- Extensions may be considered, but only with mutual written agreement between Bar Mon Ami and the artist

*Bar Mon Ami reserves the right to adjust scheduling as needed to accommodate operational or programming needs.*

# ARTIST RESPONSIBILITIES

Each exhibition at Bar Mon Ami begins with an opening night that introduces the work to our community, followed by a three-month period of natural discovery within the space. Throughout the exhibition, artists are expected to remain communicative, professional, and supportive of their work's visibility. The experience concludes with a smooth transition as the exhibition comes to a close.

## OPENING NIGHT

Each exhibition begins with an opening night at Bar Mon Ami—an evening designed to introduce your work to our community in a setting that is social, welcoming, and reflective of the bar's atmosphere.

Artists are strongly encouraged to:

- Be present and engaged throughout the event
- Interact with guests, answer questions, and speak to their work when appropriate
- Invite friends, collectors, and community to attend
- Promote the event through personal and social channels

Opening night sets the tone for the exhibition, creating connection between the artist, the work, and the space.

*Whilst Bar Mon Ami will host and promote the event, we reserve the right to determine the structure, timing, and service of the evening. Professional conduct is expected throughout.*

## END OF EXHIBITION

At the conclusion of the exhibition, artists are responsible for the timely removal of all unsold work.

Artists are expected to:

- Coordinate removal of all pieces safely and without damage
- Coordinate and complete pickup within the agreed timeframe
- Communicate any delays in advance

*Artwork not collected within the specified timeframe may be subject to storage limitations, handling fees, or relocation at the artist's expense. Bar Mon Ami reserves the right to remove and store unclaimed work as needed.*

# WHERE ART MEETS INTENTION— CREATING SPACE FOR CONNECTION, COMMUNITY, AND CONVERSATION.



At Bar Mon Ami, we are more than a bar—we are a gathering place where art, connection, and community come together. Our artist exhibitions reflect our commitment to creating meaningful experiences, using our walls to showcase work that inspires, engages, and becomes part of the space we share.

We are committed to:

**Supporting Local Artists:** Showcasing creatives who reflect and enrich the spirit of our community.

**Thoughtful Curation:** Selecting work that complements the atmosphere and invites curiosity.

**Inclusive Collaboration:** Partnering with artists of diverse backgrounds and perspectives.

**Creating Memorable Experiences:** Integrating art into the rhythm of the bar for natural, meaningful engagement.

**Lasting Relationships:** Building ongoing connections and keeping submissions on file for future exhibitions.





**BAR  
MONAMI**

4901 Broadway St.  
San Antonio, TX 78209  
(210) 320-0279

[www.barmonami.com](http://www.barmonami.com)  
[admin@barmonami.com](mailto:admin@barmonami.com)  
[@barmonamisa](#)

# BAR MON AMI ARTIST EXHIBITION AGREEMENT

This Artist Exhibition Agreement (“Agreement”), is entered into as of the \_\_\_\_\_ day in the month of \_\_\_\_\_, in the year \_\_\_\_\_, between Bar Mon Ami and \_\_\_\_\_ (Artist Name; “Artist”), outlines the terms for Artist Exhibition at Bar Mon Ami through the month’s of \_\_\_\_\_ (“Exhibition”).

**This Artist Exhibition Agreement (the “Agreement”) is entered into as of the Effective Date above by and between Bar Mon Ami (“BMA”), a Texas business entity duly organized and existing under the laws of the State of Texas, and the undersigned artist (“Artist”), collectively referred to herein as the “Parties.”**

This Agreement outlines the terms and conditions under which Bar Mon Ami will exhibit the Artist’s work within its space. The Artist acknowledges that Bar Mon Ami operates as a licensed establishment under the Texas Alcoholic Beverage Commission (TABC) and agrees to comply with all applicable laws, regulations, and venue policies while participating in the exhibition.

## ARTIST INFORMATION & SUBMISSION DETAILS

The Artist agrees to provide accurate and complete information prior to the commencement of the exhibition. This information will be used for curation, sales facilitation, and administrative purposes.

Full Legal Name: \_\_\_\_\_

Artist Name (if applicable): \_\_\_\_\_

Mailing Address: \_\_\_\_\_

Phone Number: \_\_\_\_\_

Email Address: \_\_\_\_\_

Person of Contact (if different from above): \_\_\_\_\_

Website, Portfolio, and/or Social Media Handles: \_\_\_\_\_

\_\_\_\_\_

Exhibition Date(s): \_\_\_\_\_

Short Artist Bio: \_\_\_\_\_

\_\_\_\_\_

\_\_\_\_\_

\_\_\_\_\_

\_\_\_\_\_

\_\_\_\_\_

# BAR MON AMI ARTIST EXHIBITION AGREEMENT

## EXHIBITION TERM

The Artist agrees to exhibit artwork at BMA for a period of three (3) months, beginning on \_\_\_\_\_ and ending on \_\_\_\_\_ (the "Exhibition Term").

- All artwork is expected to remain on display for the full duration of the Exhibition Term
- Any request for early removal of artwork must be communicated to and approved by BMA in advance
- Unauthorized or unapproved early removal of any artwork may result in a charge of up to \$150 per piece, at BMA's discretion, to account for disruption to the exhibition and operational impact

If artwork is approved for early removal, the Artist may be required to:

- Provide a suitable replacement piece of equal or comparable size, quality, and value, subject to BMA approval, or
- Accept that the space may be re-curated at BMA's discretion

Extensions beyond the Exhibition Term may be considered but are not guaranteed and must be mutually agreed upon in writing by both Parties.

BMA reserves the right to adjust exhibition timelines, placement, or scheduling as necessary to accommodate operational needs, safety considerations, or future programming.

## ARTWORK INSTALLATION

### The Artist agrees to:

- Deliver all artwork by the agreed installation date
- Ensure all pieces are display-ready (properly framed, wired, and secure)
- Provide all necessary hardware, tools, and materials
- Be on site to install and remove all artwork, and coordinate with Bar Mon Ami ("BMA")

BMA will have staff available to assist with installation at the direction of the Artist as a courtesy.

### Installation & Handling Liability:

The Artist retains full responsibility for the placement, security, and structural integrity of all artwork. Any assistance provided by BMA staff is performed under the Artist's direction and at the Artist's risk.

- BMA is not liable for damage to artwork during installation, display, or removal
- BMA is not responsible for improper installation or failure of hanging hardware
- The Artist assumes all risks related to installation and display

### BMA reserves the right to:

- Refuse or remove any artwork deemed unsafe or improperly installed
- Adjust placement at any time to suit the space

All installation methods must be wall-safe and approved by BMA. Any damage to the premises caused by installation may be the responsibility of the Artist.

# BAR MON AMI ARTIST EXHIBITION AGREEMENT

## INVENTORY & DOCUMENTATION

Prior to installation, the Artist shall provide Bar Mon Ami with a complete and accurate inventory of all approved artwork to ensure clarity in display, sales, and recordkeeping.

The inventory must include:

- Title
- Medium
- Dimensions
- Retail price
- QR Code linking to a direct payment method

Additional details such as year, edition, or special handling notes may be included if applicable.

All information must be final and accurate at the time of installation. Bar Mon Ami will rely on this documentation for identifying work and assisting with guest inquiries. The Artist is solely responsible for any errors, omissions, or pricing discrepancies.

Only artwork included on the approved inventory may be exhibited. Any changes, substitutions, or price adjustments must be approved in writing by Bar Mon Ami.

The submitted inventory will serve as the primary reference for all sales, inquiries, and any related matters. Artists are encouraged to retain copies for their records.

## SALES, COMMISSION, & PAYMENT

All artwork displayed at Bar Mon Ami shall be offered for sale under the following terms:

- Bar Mon Ami retains a 30% commission on the final sale price of each piece
- The Artist retains 70% of the sale price
- All prices must match the approved inventory list

### Payment Processing:

- The Artist is responsible for accepting and processing all payments directly, unless otherwise agreed in writing
- The Artist agrees to remit Bar Mon Ami's 30% commission within 30 days of sale

### Exhibition-Related Sales & Non-Circumvention:

Any sale made during the exhibition, or resulting from exposure at Bar Mon Ami, is subject to commission. The Artist agrees not to bypass this structure by selling directly to buyers introduced through Bar Mon Ami during the exhibition or within 90 days after its conclusion.

### Tax Responsibility:

The Artist is solely responsible for all applicable taxes. Bar Mon Ami does not collect or remit taxes on the Artist's behalf.

Bar Mon Ami reserves the right to request documentation of sales to ensure proper commission reporting. Failure to remit commission may result in removal from current or future exhibitions.

# BAR MON AMI ARTIST EXHIBITION AGREEMENT

## OPENING NIGHT & PROMOTION

Bar Mon Ami will host an opening night event to introduce the exhibition and create an opportunity for guests to engage with the Artist and their work in a social, welcoming setting. The Artist agrees to:

- Make reasonable efforts to attend and be present during the event
- Engage with guests and speak to their work when appropriate
- Support promotion of the exhibition through personal and social channels

Bar Mon Ami will promote the exhibition at its discretion and retains full control over the event's structure, timing, and service. The Artist acknowledges that the opening night is an informal, hospitality-driven event rather than a traditional gallery opening.

## PROFESSIONAL CONDUCT

The Artist agrees to conduct themselves in a professional and respectful manner at all times, including during installation, events, and any interactions connected to Bar Mon Ami.

Bar Mon Ami reserves the right to remove artwork and/or terminate this Agreement at any time if the Artist engages in behavior—whether in person, publicly, or on social media—that is discriminatory, including but not limited to racist, sexist, homophobic, or otherwise harmful conduct, or any actions that may negatively impact the reputation, environment, or community of Bar Mon Ami.

This standard applies throughout the exhibition term and for the duration of any public association between the Artist and Bar Mon Ami.

## LIABILITY & INSURANCE

All artwork is displayed at the Artist's sole risk. While Bar Mon Ami will handle all work with care, BMA is **not responsible for any loss, theft, damage, or deterioration under any circumstances**, including those involving guests, staff, or normal bar operations.

The Artist acknowledges that Bar Mon Ami is an active hospitality environment where factors such as lighting, temperature, and guest interaction may affect displayed work.

### **No Bailment:**

Nothing in this Agreement creates a bailment or custodial relationship. Bar Mon Ami does not assume custody or responsibility for the safekeeping of any artwork.

The Artist is solely responsible for obtaining any desired insurance coverage.

The Artist agrees to indemnify and hold harmless Bar Mon Ami, its owners, employees, and affiliates from any claims, damages, or liabilities arising from:

- The exhibition or display of the artwork
- Installation or removal of artwork
- Any injury or damage caused by the artwork

Bar Mon Ami reserves the right to remove any artwork that presents a safety concern.

# BAR MON AMI ARTIST EXHIBITION AGREEMENT

## USE OF IMAGES & PROMOTION

The Artist grants Bar Mon Ami the right to photograph, document, and reproduce images of the artwork for promotional and marketing purposes. This includes, but is not limited to, use on social media, website content, printed materials, and press features.

The Artist represents that they have full rights to the artwork and that such use will not infringe on any third-party rights.

No additional compensation will be provided for the use of these images. Bar Mon Ami will make reasonable efforts to credit the Artist when appropriate.

## END OF EXHIBITION

At the conclusion of the exhibition, the Artist is responsible for the timely removal of all unsold artwork.

The Artist agrees to:

- Coordinate and complete pickup within the agreed timeframe
- Remove all work safely and without damage to the space
- Communicate any delays in advance

Unless otherwise agreed, sold works may remain on display until the end of the exhibition.

Artwork not collected within the specified timeframe may be subject to storage limitations, handling charges, or relocation at the Artist's expense. Bar Mon Ami reserves the right to remove and store unclaimed work as needed to prepare for the next exhibition.

## TERMINATION

Bar Mon Ami reserves the right to terminate this Agreement at any time for reasons including, but not limited to:

- Breach of any terms outlined in this Agreement
- Safety concerns related to the artwork
- Conduct that negatively impacts the bar or its community
- Operational or scheduling needs

In the event of termination, the Artist will be notified and required to remove all artwork within a reasonable timeframe.

Bar Mon Ami shall not be liable for any loss of potential sales, future earnings, or related damages resulting from early termination of the exhibition.

# BAR MON AMI ARTIST EXHIBITION AGREEMENT

## ENTIRE AGREEMENT

This Agreement constitutes the entire understanding between Bar Mon Ami and the Artist and supersedes all prior discussions, representations, or agreements, whether written or verbal.

Any amendments or modifications to this Agreement must be made in writing and signed by both parties. No verbal agreements shall be considered binding.

## GOVERNING LAW

This Agreement shall be governed by and construed in accordance with the laws of the State of Texas.

Any disputes arising under or related to this Agreement shall be resolved in the appropriate courts located within Bexar County, Texas.

## ACKNOWLEDGEMENT & SIGNATURE

By signing below, both parties acknowledge that they have read, understood, and agree to the terms outlined in this Agreement.

This Agreement may be executed in counterparts and via electronic signature, each of which shall be considered valid and binding.

Artist Name: \_\_\_\_\_

Artist Signature: \_\_\_\_\_

Date: \_\_\_\_\_

Bar Mon Ami Representative: \_\_\_\_\_

Signature: \_\_\_\_\_

Date: \_\_\_\_\_

**WHERE EVERY PIECE  
BECOMES PART OF THE EVENING.**