

BAR MON AMI



**ARTIST
EXHIBITION
PROGRAM**

TABBLE OF CONTENTS

01 - PAGE 4

How It Works - Quick Guide

02 - PAGE 5

Selection Process

03 - PAGE 6

Promotion & Partnership

04 - PAGE 7

Exhibition Term


05 - PAGE 8

Artist Responsibilities

06 - PAGE 11

Our Commitment

A THOUGHTFUL PATH FROM SUBMISSION TO EXHIBITION.



This guide outlines how artist exhibitions are presented at Bar Mon Ami (BMA), offering a clear overview of the process from submission through installation, sales, and closing. It is designed to provide artists with everything needed to confidently participate—covering expectations, responsibilities, and the overall experience of showcasing work within the space.

At Bar Mon Ami, our walls are more than a backdrop—they are part of the experience. Each exhibition is curated with the same care as our cocktails: thoughtful, layered, and designed to invite curiosity.

We feature quarterly rotating exhibitions, highlighting artists whose work complements the intimacy, warmth, and conversational nature of the space. From subtle, intricate pieces to bold visual statements, each collection is selected to live comfortably within the rhythm of the bar. All exhibited works are available for purchase, with a commission retained by Bar Mon Ami upon sale. Each exhibition is introduced with an opening night gathering, where guests are invited to meet the artist, explore the work, and experience the space in a new light.



HOW IT WORKS

QUICK GUIDE

Our exhibition process is designed to be clear, collaborative, and intentional—guiding each artist from initial submission through installation and into a fully realized exhibition within the space. Each step is thoughtfully structured to ensure your work is presented with care and experienced as part of the Bar Mon Ami atmosphere (BMA).



SUBMIT YOUR WORK

01.

Submit images, a brief bio, and detailed information that reflects your work and artistic perspective. Be sure to include key details such as medium, dimensions, pricing, and any cohesive concept behind the collection..

SELECTION & CONFIRMATION

02.

Selected artists are contacted to confirm participation, with exhibition timing, expectations, and key details outlined—including a 30% commission retained by the bar on all works sold. Artists will receive guidance on next steps, including preparation requirements such as providing anti-theft measures and clear labeling for each piece.

THE PROMOTION

03.

Each exhibition is thoughtfully promoted through BMA's social channels and in-house visibility. This ensures your work is introduced to our community and integrated into the ongoing experience of the space.

EXHIBIT & EXPERIENCE

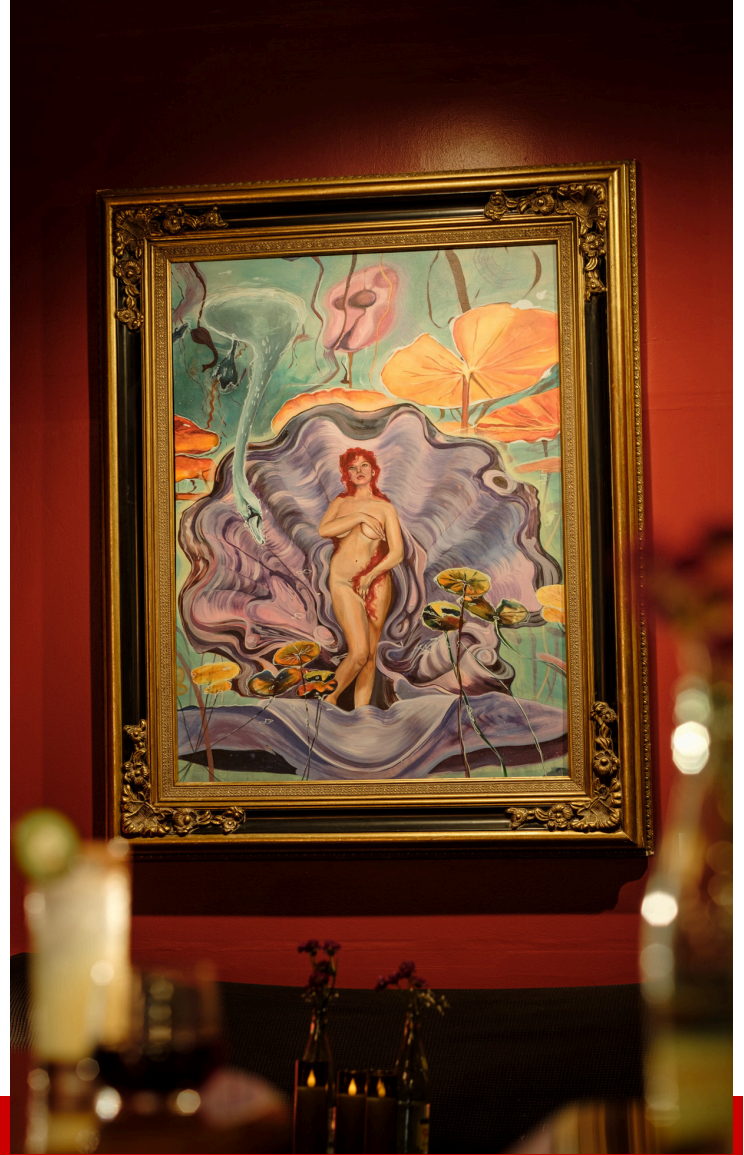
04.

Artists coordinate delivery and installation within the scheduled timeframe, preparing their work to live within the space. The exhibition is introduced with an opening night at the bar and remains on display for a three-month term, with all pieces available for purchase throughout.

SELECTION PROCESS

Every exhibition at Bar Mon Ami (BMA) is approached with care and intention. We consider how each artist's work will live within the space—not only visually, but atmospherically—ensuring it complements the rhythm of the bar and invites guests to engage, linger, and connect.

Our selection process is thoughtful, collaborative, and designed to give each body of work the right moment to be experienced.



SUBMISSION & REVIEW 01.

- Artists submit images, a brief bio, and detailed information that offers a clear sense of their work, perspective, and overall style.
- Each submission is thoughtfully reviewed for quality, cohesion, and presentation; both individual pieces and the collection as a whole.
- Careful attention is given to how the work aligns with the tone, intimacy, and atmosphere of the bar.

CURATION & SELECTION 02.

- Submissions are evaluated with consideration of scale, material, and overall presence within the space.
- We select work that creates a balanced and cohesive exhibition, allowing each piece to stand on its own while contributing to the overall experience.
- *Continued on right*

- Layout, lighting, and the natural flow of the bar are considered to ensure each piece is properly seen and comfortably experienced.

SCHEDULING & CONFIRMATION 03.

- Selected artists are contacted to confirm participation and secure placement within an upcoming exhibition.
- Exhibition timing, expectations, and key details are clearly outlined to ensure alignment from the start.
- Installation, opening night, and final logistics are coordinated collaboratively, creating a seamless and thoughtfully presented experience.

PROMOTION & PARTNERSHIP

Promotion at Bar Mon Ami (BMA) is a shared effort—designed to thoughtfully introduce each exhibition to our community while maintaining the tone and intimacy of the space. We support each artist through curated visibility, while also encouraging artists to actively engage their own audience to create a well-rounded and successful exhibition.



EXHIBITION ANNOUNCEMENT 01.

- BMA will announce the upcoming exhibition across social media and in-house channels.
- Artists are encouraged to share the announcement and tag BMA (@barmonamisa) to extend reach.

OPENING NIGHT 02.

- BMA will host and promote the opening night, providing a welcoming, social setting and featuring a curated cocktail in honor of the artist; our team will help coordinate all setup and breakdown at no cost.
- Artists are encouraged to attend, engage with guests, and invite their network; light snacks are welcomed but not required, and BMA *may* assist in sharing the cost upon request, depending on scope and reasonability*

ONGOING VISIBILITY 03.

- BMA will highlight select works throughout the exhibition via social media and in-bar exposure.
- Artists are encouraged to continue sharing their work, visits, and moments from the exhibition.

COLLABORATION & CONTENT 04.

- BMA may collaborate on content featuring the artist and their work, including curated posts, stories, and in-bar highlights when appropriate.
- Artists should provide high-quality images, background details, and be open to light collaboration, such as features, tags, and shared content to support visibility.

EXHIBITION TERM

Each exhibition at Bar Mon Ami is presented over a three-month (quarterly) term, allowing the work to settle naturally into the rhythm of the space. Unlike a traditional gallery setting, our environment invites discovery over time—guests return, notice new details, and engage with the work in a more organic, lived-in way.

The exhibition timeline is thoughtfully structured to ensure a smooth and intentional transition:

INSTALLATIONS:

- Installation is scheduled in advance and coordinated closely with our team. This process is designed to be unhurried and considered, allowing the work to be placed in a way that feels cohesive with the flow, lighting, and atmosphere of the bar.
- All artwork must be delivered by the agreed-upon date. *Failure to meet installation deadlines may result in forfeiture or rescheduling of the exhibition at Bar Mon Ami's discretion.*

OPENING NIGHT

- Shortly after installation, we host an opening evening to introduce the exhibition. This is a social, welcoming gathering—less formal than a gallery opening, and more in line with the spirit of Bar Mon Ami.
- *Bar Mon Ami reserves the right to determine the timing, format, and execution of the opening event.*

ACTIVE EXHIBITION PERIOD

- Throughout the three-month term, the work remains on display and available for purchase. Guests encounter the pieces in passing, in conversation, and across multiple visits—allowing for a slower, more meaningful engagement.
- *Bar Mon Ami reserves the right to adjust placement of artwork at any time to best suit the space. In rare circumstances, work may be removed if deemed unsafe, damaged, or inconsistent with the environment.*

DEINSTALLATION

- At the close of the exhibition, deinstallation is scheduled in advance to ensure a seamless transition into the next rotation. Artists are responsible for coordinating the removal of their work within the agreed timeframe.
- *Any artwork not removed within the specified timeframe may be subject to storage limitations, fees, or relocation at the artist's expense.*

ARTIST RESPONSIBILITIES

At Bar Mon Ami, exhibitions are a collaboration—your work brings the walls to life, and together we create an experience that feels cohesive, intentional, and welcoming. To ensure a smooth and successful exhibition, artists are expected to take an active and professional role throughout the process.

PREPERATION & DELIVERY

Artists are responsible for:

- Delivering all artwork by the agreed-upon installation date
- Ensuring all pieces arrive clean, finished, and ready for display
- Confirming that all work matches the submitted and approved selections

Late delivery or incomplete submissions may result in delays, adjustments, or cancellation of the exhibition at Bar Mon Ami's discretion.

INSTALLATION

Artists are expected to:

- Be on site and coordinate with Bar Mon Ami team for assistance during installation
- Use secure, wall-safe hanging methods (D-rings and wire preferred)
- Bring any necessary tools or hardware required for installation
- Final placement may be adjusted in collaboration with our team to ensure the work aligns with the layout, lighting, and flow of the space.

Bar Mon Ami reserves the right to reposition or decline installation of any work that presents safety concerns or does not meet display standards.

DOCUMENTATION & INVENTORY

Prior to installation, artists must provide a complete and accurate record of all exhibited works, including:

- Title
- Medium
- Dimensions
- Price
- QR code linking to a direct payment method

This information allows our team to confidently communicate with guests and facilitate sales.

Bar Mon Ami is not responsible for errors in pricing or missing information provided by the artist.

ARTIST RESPONSIBILITIES

SALES, COMMISSION, & PAYMENT

All artwork displayed at Bar Mon Ami is offered for sale under the following terms:

- Bar Mon Ami retains a 30% commission on the final sale price of each piece
- The remaining 70% is retained by the artist
- Artists are responsible for accepting and processing all payments directly from buyers, unless otherwise agreed in writing with Bar Mon Ami
- The bar's 30% commission must be remitted to Bar Mon Ami no later than 30 days following the sale of the work

Tax Responsibility:

- Artists are solely responsible for reporting and paying any applicable taxes related to the sale of their artwork, including income tax or other required filings. Bar Mon Ami does not collect or remit taxes on behalf of the artist in direct-sale situations.

Bar Mon Ami reserves the right to request documentation of completed sales to ensure proper commission reporting and payment. Failure to remit commission within the stated timeframe may result in removal from current or future exhibitions.

PROFESSIONAL CONDUCT

Artists are expected to:

- Communicate clearly and promptly regarding scheduling, sales, and logistics
- Conduct themselves professionally during installation, events, and interactions with staff and guests
- Actively participate in promoting the exhibition and sharing with their audience
- Respect the shared nature of the space as a working bar environment

Bar Mon Ami reserves the right to remove artwork and/or terminate the exhibition at any time if the artist engages in racist, sexist, homophobic, or otherwise discriminatory or harmful behavior, whether in person, publicly, or on social media, that reflects poorly on the bar or its community.

EXHIBITION DURATION

All exhibitions at Bar Mon Ami are presented for a three-month (quarterly) term, allowing the work to live naturally within the space and be discovered over time.

- The exhibition will remain on display for the full agreed term; early removal by the artist may result in an early termination fee
- Extensions may be considered, but only with mutual written agreement between Bar Mon Ami and the artist

Bar Mon Ami reserves the right to adjust scheduling as needed to accommodate operational or programming needs.

ARTIST RESPONSIBILITIES

Each exhibition at Bar Mon Ami begins with an opening night that introduces the work to our community, followed by a three-month period of natural discovery within the space. Throughout the exhibition, artists are expected to remain communicative, professional, and supportive of their work's visibility. The experience concludes with a smooth transition as the exhibition comes to a close.

OPENING NIGHT

Each exhibition begins with an opening night at Bar Mon Ami—an evening designed to introduce your work to our community in a setting that is social, welcoming, and reflective of the bar's atmosphere.

Artists are strongly encouraged to:

- Be present and engaged throughout the event
- Interact with guests, answer questions, and speak to their work when appropriate
- Invite friends, collectors, and community to attend
- Promote the event through personal and social channels

Opening night sets the tone for the exhibition, creating connection between the artist, the work, and the space.

Whilst Bar Mon Ami will host and promote the event, we reserve the right to determine the structure, timing, and service of the evening. Professional conduct is expected throughout.

END OF EXHIBITION

At the conclusion of the exhibition, artists are responsible for the timely removal of all unsold work.

Artists are expected to:

- Coordinate removal of all pieces safely and without damage
- Coordinate and complete pickup within the agreed timeframe
- Communicate any delays in advance

Artwork not collected within the specified timeframe may be subject to storage limitations, handling fees, or relocation at the artist's expense. Bar Mon Ami reserves the right to remove and store unclaimed work as needed.

WHERE ART MEETS INTENTION— CREATING SPACE FOR CONNECTION, COMMUNITY, AND CONVERSATION.



At Bar Mon Ami, we are more than a bar—we are a gathering place where art, connection, and community come together. Our artist exhibitions reflect our commitment to creating meaningful experiences, using our walls to showcase work that inspires, engages, and becomes part of the space we share.

We are committed to:

Supporting Local Artists: Showcasing creatives who reflect and enrich the spirit of our community.

Thoughtful Curation: Selecting work that complements the atmosphere and invites curiosity.

Inclusive Collaboration: Partnering with artists of diverse backgrounds and perspectives.

Creating Memorable Experiences: Integrating art into the rhythm of the bar for natural, meaningful engagement.

Lasting Relationships: Building ongoing connections and keeping submissions on file for future exhibitions.





**BAR
MONAMI**

4901 Broadway St.
San Antonio, TX 78209
(210) 320-0279

www.barmonami.com
admin@barmonami.com
[@barmonamisa](#)